



# AUSTRALIAN MUSEUM

## Constellation Stories

### CLIENT

The Australian Museum is the oldest museum in Australia, with an international reputation in the fields of natural history and anthropology. nsquared was approached to create an interactive installation designed to support a NSW state education program about indigenous people and their stories.

nsquared designed a multi-user activity, built for the SUR40 PixelSense table. This application helped children learn the Dreamtime stories of how the constellations in the sky were formed.

### CHALLENGES

- [1] Communicate the Dreamtime stories in a clear and engaging way

---

- [2] Create fun and memorable experiences.

---

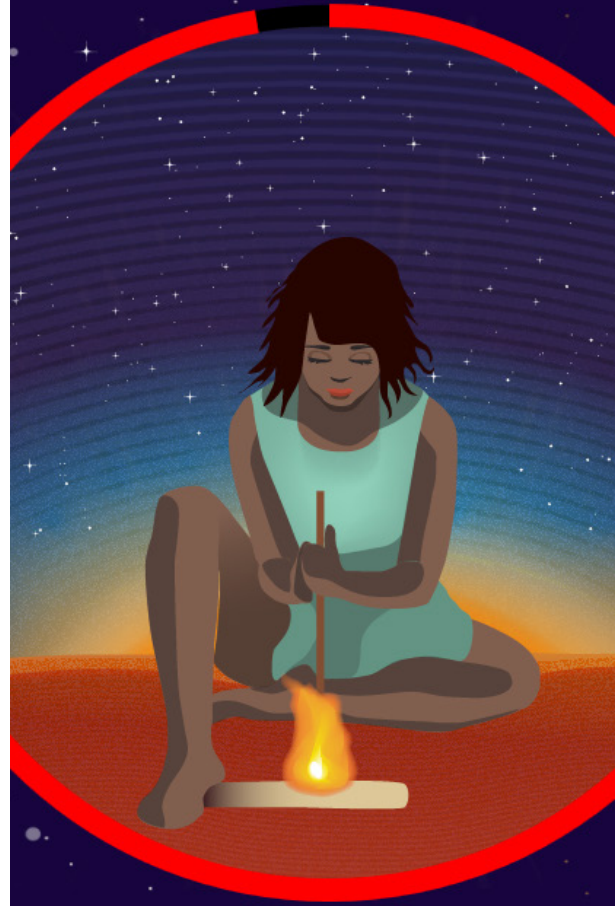
- [3] Help students develop deeper connections to the history of Australia.

---

- [4] Create a robust application that can stand up to huge crowds of people.

---

Draw your own small fire.



Draw your own small fire

*“Each drawing by each student becomes a part of the whole story.”*

## SOLUTION

The application displays a scrolling list of celestial bodies, when a constellation is chosen the Dreamtime story is told as a series of interactive components.

Each part of the story displays a beautifully illustrated picture along with a line or two of text. The students are then asked to draw their own version of that part of the story.

Each drawing by each student becomes a part of the whole story and as the students progress through the story they build out their own story board for the tale being told.

## BENEFITS

[1] Integrating the students drawings helped the students feel like they were part of the story.

---

[2] The multi-user experience fostered co-operation.

---

[3] Mixed timely technology with timeless stories.

---

[4] Hands on experience for kinesthetic learners.

---

The students can paint their pictures with their fingers or with paint brushes supplied at the venue. This creates a richer sense of realism and blurs the line between physical and virtual worlds.


# nsquared

digitable.co

info@nsquaredsolutions.com

+61 2 9262 3386

nsquared



*“Creates a richer sense of realism and blurs the line between physical and virtual worlds.”*

Australian Museum - Constellation Stories